

# Exhall Meadows

## The Denton 3 bedroom home

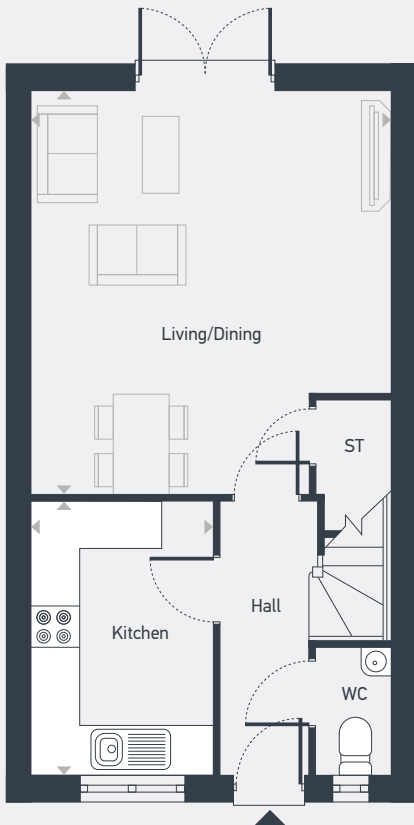


# Exhall Meadows

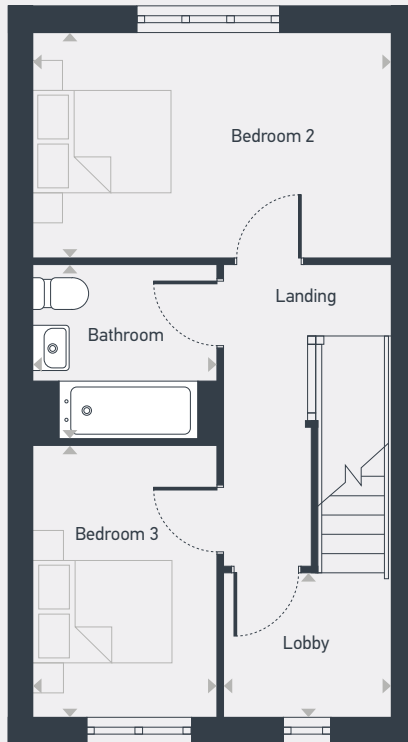
# The Denton 3 bedroom home

Plots as drawn: 6, 8, 33, 35, 44, 50, 60, 86 and 92  
 Handed: 7, 9, 32, 34, 45, 51, 61, 85 and 91

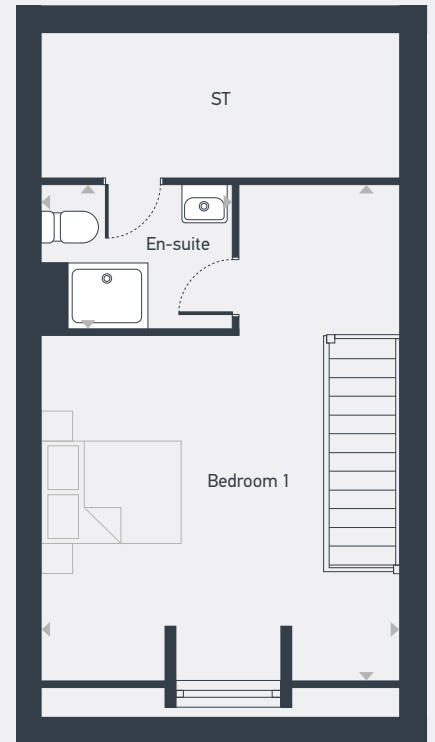
101.08 sq. m / 1,088 sq. ft



GROUND FLOOR



FIRST FLOOR



SECOND FLOOR

ST: Storage WC: Water Closet

DIMENSIONS	m	ft
Kitchen	3.40m x 2.26m	11'2" x 7'5"
Living/Dining	4.97m x 4.42m	16'4" x 14'6"

DIMENSIONS	m	ft
Bedroom 1	4.42m x 3.29m	16'3" x 9'1"
En-suite	2.41m x 1.77m	16'3" x 9'1"
Bedroom 2	4.42m x 2.76m	14'6" x 9'1"
Bedroom 3	3.35m x 2.31m	11'0" x 7'7"
Lobby	2.02m x 1.78m	6'8" x 5'10"
Bathroom	2.31m x 2.16m	7'7" x 7'1"



02476 601669 | [radford@bairstowevescountrywide.co.uk](mailto:radford@bairstowevescountrywide.co.uk) | [placesforpeople.co.uk/exhallmeadows](http://placesforpeople.co.uk/exhallmeadows)  
 78 Jubilee Crescent, COVENTRY, West Midlands CV6 3ET

Please note: All layouts and floor plans, configurations, maps and information are intended for guidance only and accuracy of this information cannot be relied upon by prospective purchasers who must make their own enquiries to satisfy themselves by inspection or otherwise as to the correct detail.