

Marble Square

The Belgrave 3 bedroom home

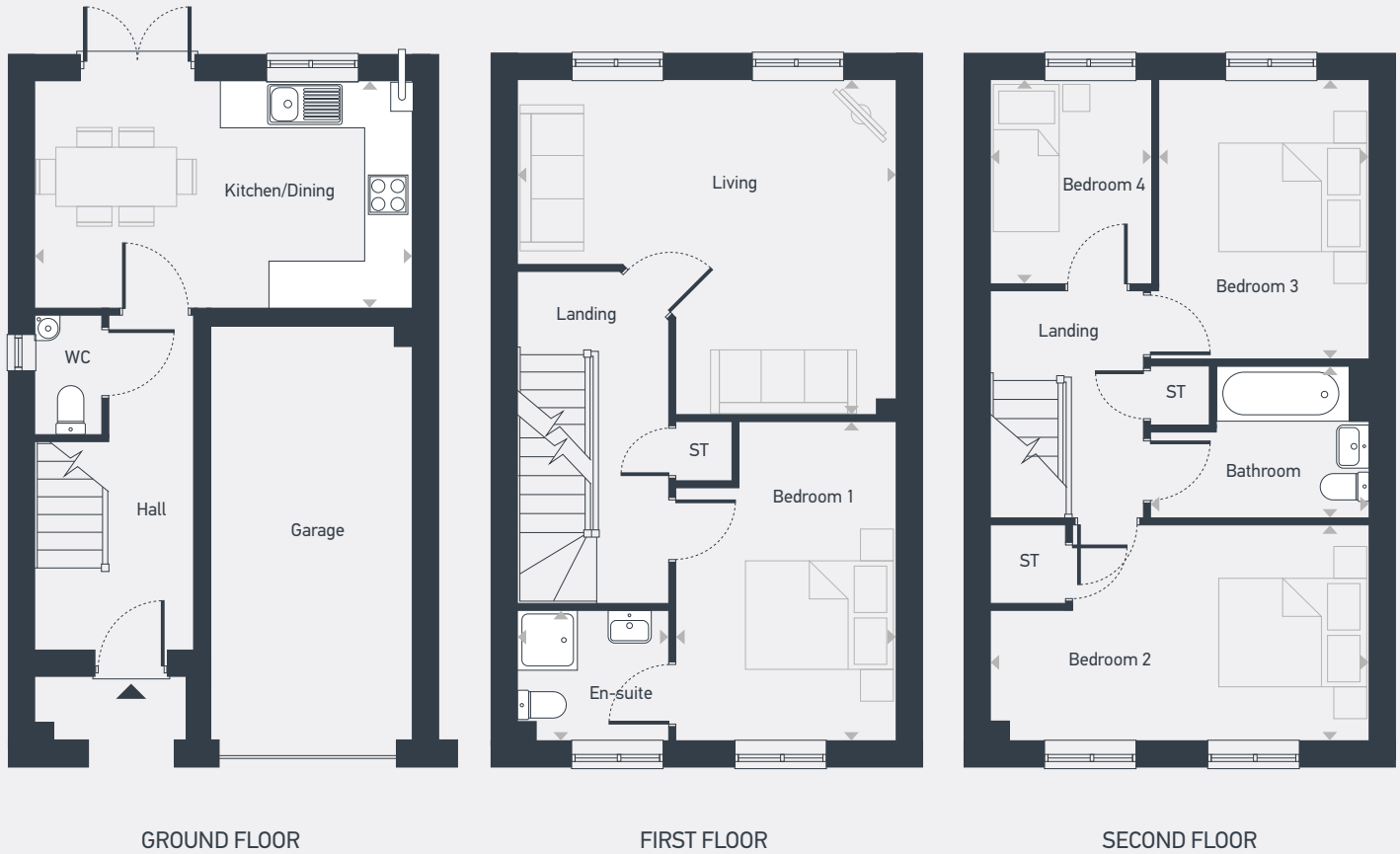


Marble Square

The Belgrave 3 bedroom home

Plot as drawn: 56
Handed: 57

107.2 sq.m / 1,154 sq.ft



ST: Storage WC: Water Closet

DIMENSIONS	m	ft
Kitchen/Dining	4.82m x 2.91m	15'10" x 9'7"

DIMENSIONS	m	ft
Living	4.84m x 4.28m	15'10" x 14'0"
Bedroom 1	4.08m x 2.81m	13'4" x 9'3"
En-suite	1.93m x 1.66m	6'4" x 5'5"
Bedroom 2	4.84m x 2.75m	15'10" x 9'0"
Bedroom 3	3.57m x 2.68m	11'8" x 8'10"
Bedroom 4	2.60m x 2.06m	8'6" x 6'9"
Bathroom	2.79m x 1.94m	9'2" x 6'4"



07973 813 331 | southyorkshire@lslnewhomes.co.uk | placesforpeople.co.uk/marblesquare
Marble Square, Nightingale Road, Osmaston, Derby DE24 8BF

Please note: All CGIs, layouts and floor plans, configurations, maps and information are intended for guidance only and accuracy of this information cannot be relied upon by prospective purchasers who must make their own enquiries to satisfy themselves by inspection or otherwise as to the correct detail. Sizes and dimensions approximate and subject to change.