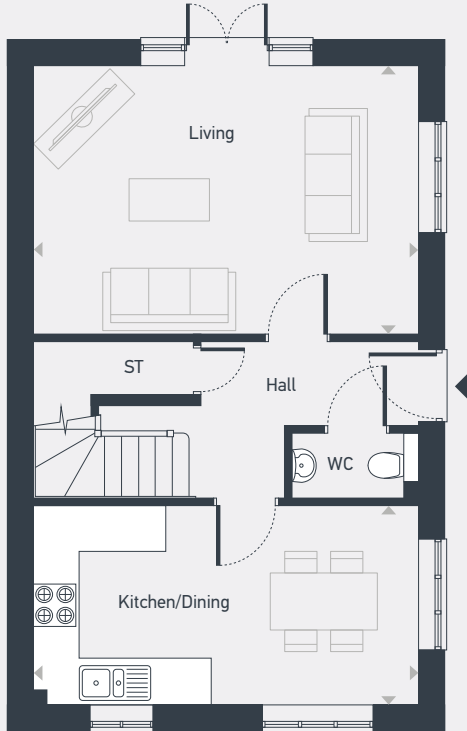


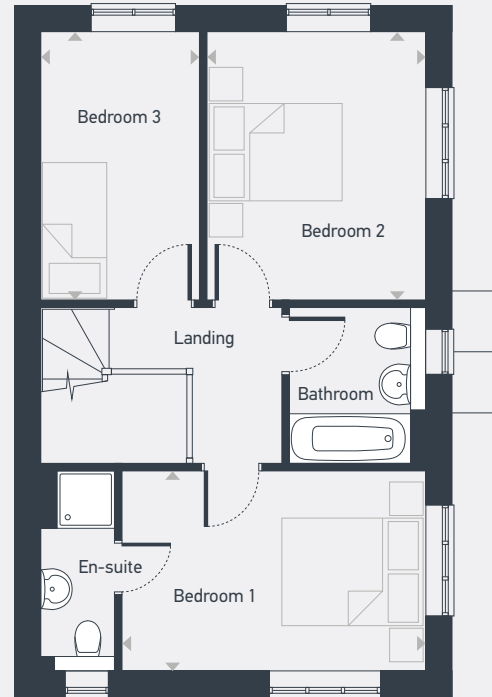


Plots as drawn: 125, 142, 148 and 150
Handed: 112

1,033.2 sq. ft



GROUND FLOOR



FIRST FLOOR

ST: Store WC: Water Closet

DIMENSIONS	m	ft
Living	5.39m x 3.76m	17'8" x 12'4"
Kitchen/Dining	5.39m x 2.78m	17'8" x 9'1"
Bedroom 1	4.26m x 2.80m	13'11" x 9'2"
Bedroom 2	3.74m x 3.06m	12'3" x 10'0"
Bedroom 3	3.76m x 2.22m	12'4" x 7'3"



01865 575 465 | placesforpeople.co.uk/meadowbrook
High Street, Chalgrove, Oxford OX44 7AF