

Elveden Place

The Coleridge 3 bedroom home

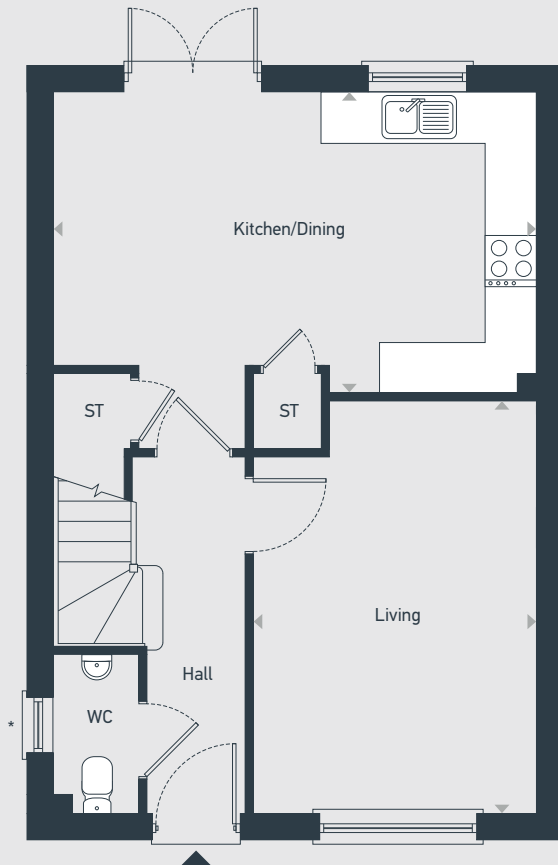


Elveden Place

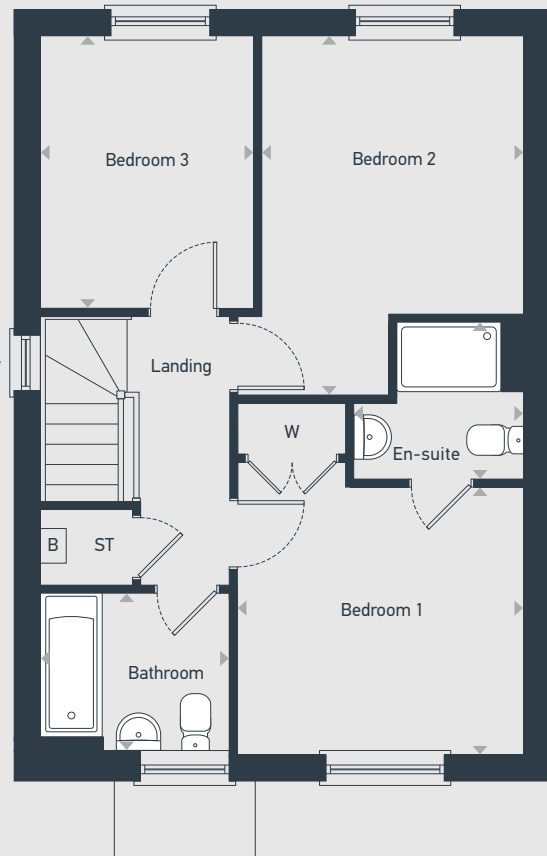
The Coleridge 3 bedroom home

Plots as drawn: 45, 62 and 94

1,040 sq.ft / 96.62 sq.m



GROUND FLOOR



FIRST FLOOR

ST: Store WC: Water Closet B: Boiler W: Wardrobe *Plot specific window to plot 45

DIMENSIONS	m	ft
Living	4.81m x 3.31m	15'9" x 10'10"
Kitchen/Dining	5.63m x 3.53m	18'5" x 11'7"

DIMENSIONS	m	ft
Bedroom 1	3.34m x 3.16m	11'0" x 10'4"
En-suite	2.03m x 1.86m	6'8" x 6'1"
Bedroom 2	4.21m x 3.06m	13'9" x 10'0"
Bedroom 3	3.19m x 2.48m	10'6" x 8'2"
Bathroom	2.32m x 1.97m	7'7" x 6'6"



placesforpeople.co.uk/elvedenplace
Elveden Place, off Norwich Road, Thetford, IP24 2RF

Please note: All layouts and floor plans, configurations, maps and information are intended for guidance only and accuracy of this information cannot be relied upon by prospective purchasers who must make their own enquiries to satisfy themselves by inspection or otherwise as to the correct detail.