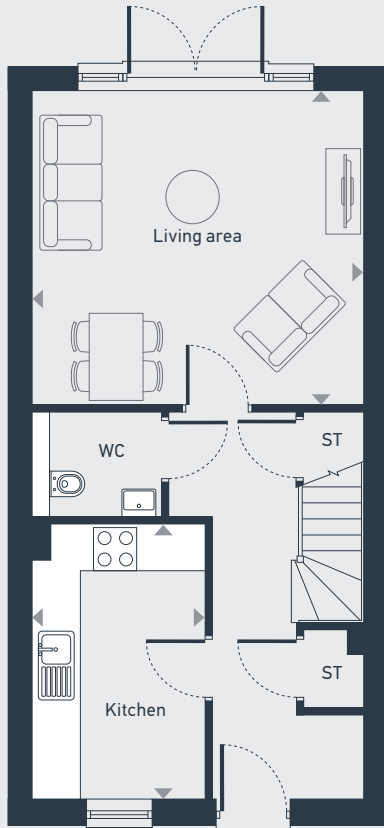


Meadowside

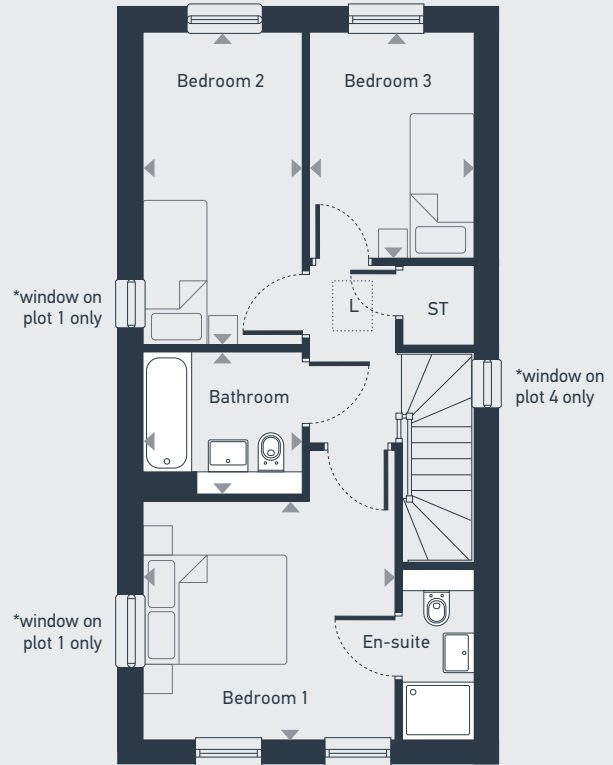
The Caldecott 3 bed house

Plots as drawn: 1, 2, 3 & 4

91.74sq.m / 987.47sq.ft



GROUND FLOOR



FIRST FLOOR

ST: Storage L: Loft hatch

DIMENSIONS	m	ft
Living	4.62m x 4.37m	15'2" x 14'4"
Kitchen/Dining	3.84m x 2.40m	12'7" x 7'11"

DIMENSIONS	m	ft
Bedroom 1	3.35m x 3.30m	11'17" x 10'10"
En-suite	1.0m x 2.37m	3'3" x 7'9"
Bedroom 2	4.36m x 2.24m	14'4" x 7'4"
Bedroom 3	3.15m x 2.29m	10'4" x 7'6"
Bathroom	2.24m x 2.00m	7'4" x 6'7"



01908 562 011 | stonystratford@brownandmerry.co.uk

Brown and Merry Stony Stratford, 65 High St, Stony Stratford, Milton Keynes, MK11 1AY

Please note: All layouts and floor plans, configurations, maps and information are intended for guidance only and accuracy of this information cannot be relied upon by prospective purchasers who must make their own enquiries to satisfy themselves by inspection or otherwise as to the correct detail.