

Marble Square

The Crimson 3 bedroom home

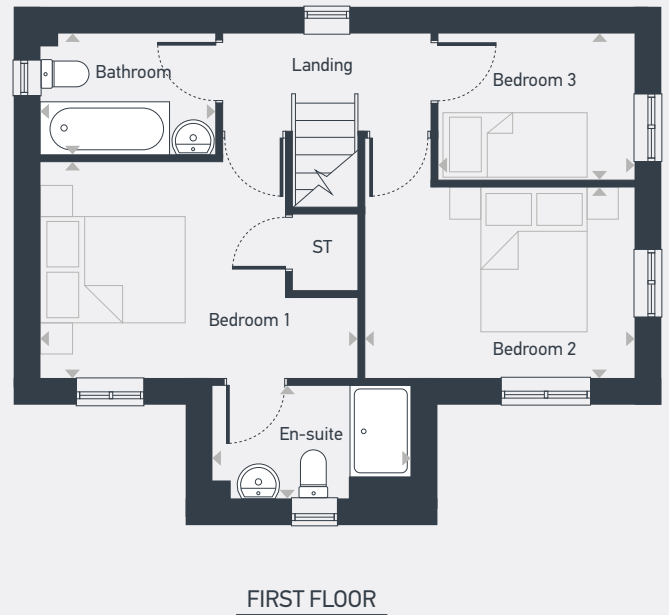
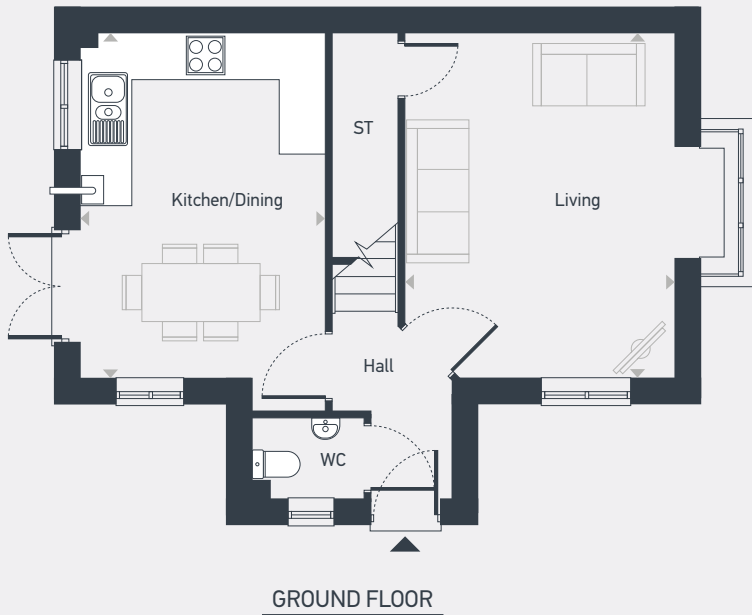


Marble Square

The Crimson 3 bedroom home

Plot as drawn: 147

80.55 sq.m / 867 sq.ft



ST: Storage WC: Water Closet

DIMENSIONS	m	ft
Kitchen/Dining	4.56m x 3.24m	14'11" x 10'8"
Living	4.56m x 4.24m	14'11" x 13'11"

DIMENSIONS	m	ft
Bedroom 1	4.19m x 2.87m	13'9" x 9'5"
En-suite	2.65m x 1.52m	8'8" x 5'0"
Bedroom 2	3.57m x 2.54m	11'8" x 8'4"
Bedroom 3	2.61m x 1.96m	8'7" x 6'5"
Bathroom	2.33m x 1.63m	7'8" x 5'4"



07973 813 331 | southyorkshire@lslnewhomes.co.uk | placesforpeople.co.uk/marblesquare
Marble Square, Nightingale Road, Osmaston, Derby DE24 8BF

Please note: All CGIs, layouts and floor plans, configurations, maps and information are intended for guidance only and accuracy of this information cannot be relied upon by prospective purchasers who must make their own enquiries to satisfy themselves by inspection or otherwise as to the correct detail. Sizes and dimensions approximate and subject to change.