

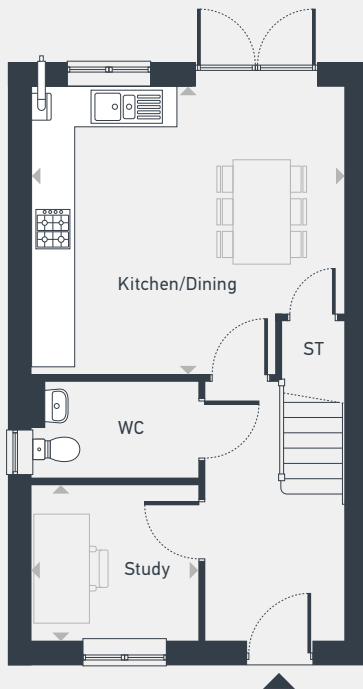


# Newcourt Edge

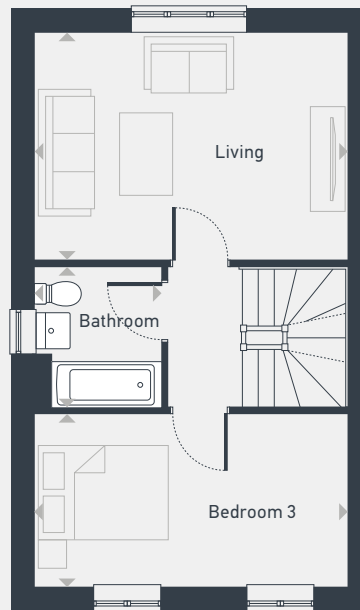
## The Poplar 3 bedroom home

Plots as drawn: 1, 5, 51, 59, 72, 91, 95, 116, 118, 129, 137  
Plots handed: 4, 6, 54, 62, 69, 88, 92, 128, 136

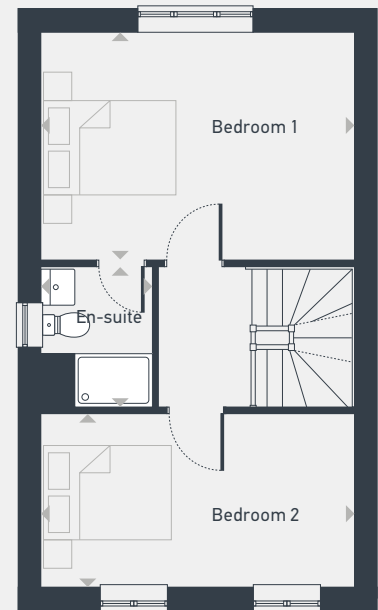
118.59 sq m / 1277 sq ft



GROUND FLOOR



FIRST FLOOR



SECOND FLOOR

DIMENSIONS	m	ft
Living	4.74m x 3.46m	15'7" x 11'4"
Kitchen/Dining	4.74m x 4.38m	15'7" x 14'5"
Study	2.57m x 2.32m	8'5" x 7'7"

DIMENSIONS	m	ft
Bedroom 1	4.74m x 3.46m	15'7" x 11'4"
En-suite	2.12m x 1.69m	6'11" x 5'7"
Bedroom 2	4.74m x 2.57m	15'7" x 8'5"
Bedroom 3	4.74m x 2.57m	15'7" x 8'5"
Bathroom	2.12m x 1.95m	6'11" x 6'5"



01392 590 255 | [placesforpeople.co.uk/newcourtedge](https://placesforpeople.co.uk/newcourtedge)  
Newcourt Edge, Ikea Way, Exeter EX2 7RX

**Please note:** All layouts and floor plans, configurations, maps and information are intended for guidance only and accuracy of this information cannot be relied upon by prospective purchasers who must make their own enquiries to satisfy themselves by inspection or otherwise as to the correct detail. Sizes and dimensions approximate and subject to change.