

# AVAILABLE TO RESERVE OFF PLAN NOW WITH ANTICIPATED HANDOVER DECEMBER 2024

## PLOT 60 & 84

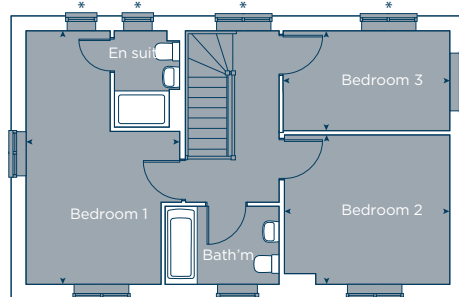
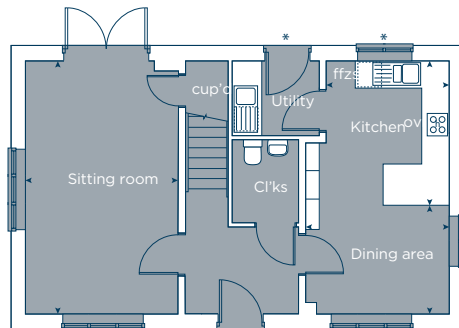
### GROUND

Kitchen	3.16 x 2.69	10' 4" x 8' 9"
Dining area	3.14 x 2.37	10' 3" x 7' 9"
Sitting room	5.53 x 3.32	18' 1" x 10' 10"

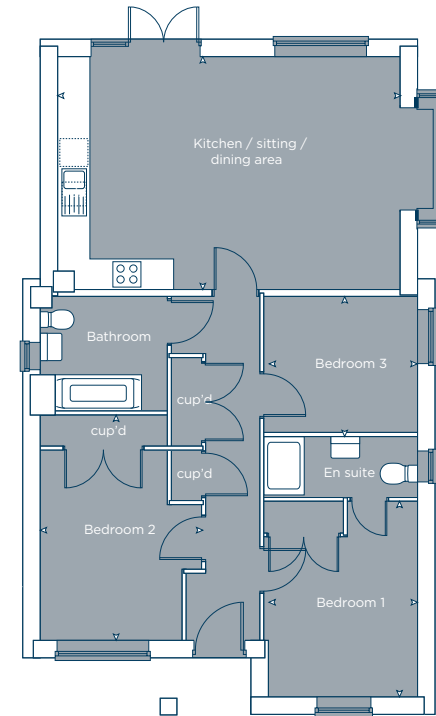


### FIRST

Bedroom 1	5.53 x 3.35	18' 2" x 11' 0"
Bedroom 2	3.60 x 3.27	11' 10" x 10' 9"
Bedroom 3	3.65 x 2.19	12' 0" x 7' 2"



## PLOTS 64 & 84



### GROUND FLOOR

Kitchen / dining area	6.76 x 4.57	22' 2" x 14' 11"
Bedroom 1	3.86 x 2.94	12' 8" x 9' 11"
Bedroom 2	4.44 x 3.19	14' 7" x 10' 6"
Bedroom 3	3.04 x 2.69	10' 0" x 8' 10"

