

Shopwyke View

The Stoughton 3 bedroom house

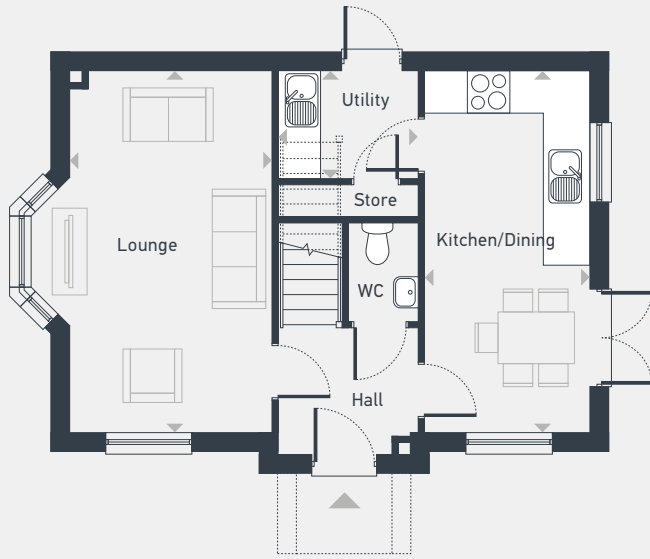


Shopwyke View

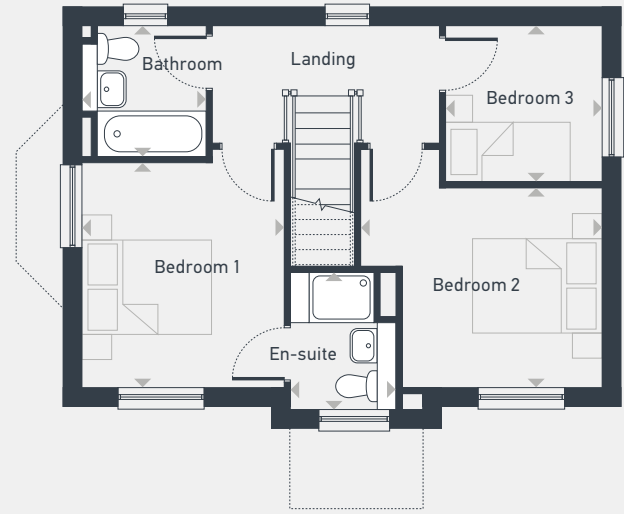
The Stoughton 3 bedroom house

Plots 8, 14 & 15 — detached
Plot 15 — handed

93 sq m / 997 sq ft



GROUND FLOOR



FIRST FLOOR

DIMENSIONS	m	ft
Kitchen/Dining	5.63m x 2.58m	18'6" x 8'6"
Lounge	5.63m x 3.16m	18'6" x 10'4"

DIMENSIONS	m	ft
Bedroom 1	3.52m x 2.94m	11'7" x 9'8"
En-suite	2.13m x 1.65m	7'0" x 5'5"
Bedroom 2	3.77m x 3.12m	12'4" x 10'3"
Bedroom 3	2.46m x 2.44m	8'1" x 8'0"
Bathroom	2.05m x 1.98m	6'9" x 6'6"



01444 360 065 | placesforpeople.co.uk/shopwykeview
Shopwyke View, Sheerwater Way, Chichester PO20 2JQ

Please note: All CGIs, layouts and floor plans, configurations, maps and information are intended for guidance only and accuracy of this information cannot be relied upon by prospective purchasers who must make their own enquiries to satisfy themselves by inspection or otherwise as to the correct detail. Sizes and dimensions approximate and subject to change.