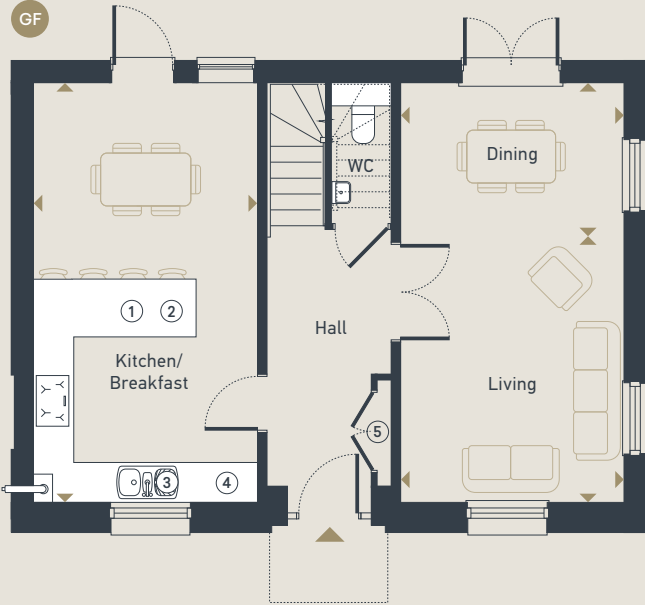


3 bedroom home

PLOTS AS DRAWN 462, 463 & 469
PLOT HANDED 465

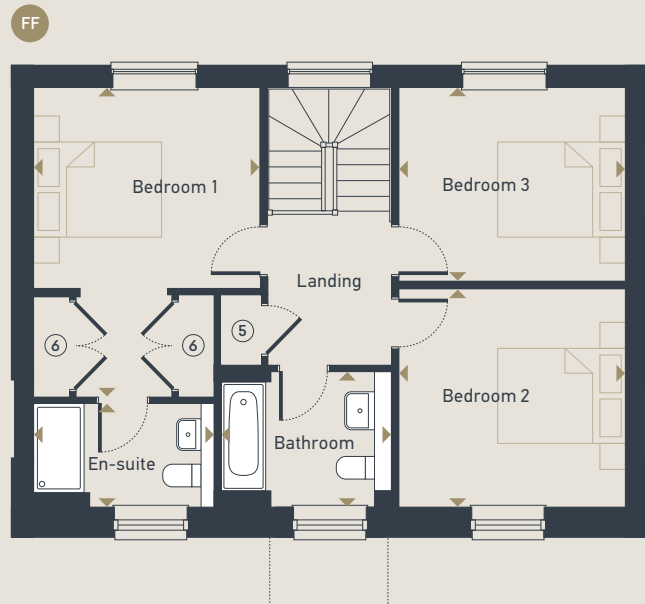
122.84 sq m / 1,322.24 sq ft

- | | |
|--------------|-------------------|
| ① Fridge | ④ Washer/Dryer |
| ② Freezer | ⑤ Store cupboard |
| ③ Dishwasher | ⑥ Fitted wardrobe |



GROUND FLOOR

Living:	4.28m x 3.52m	14'0" x 11'7"
Kitchen/Breakfast:	6.59m x 3.52m	21'7" x 11'7"
Dining:	3.52m x 2.33m	11'7" x 7'7"



FIRST FLOOR

Bedroom 1:	4.87m x 3.55m	15'12" x 11'8"
En-suite:	2.84m x 1.63m	9'4" x 5'4"
Bedroom 2:	3.55m x 3.43m	11'7" x 11'3"
Bedroom 3:	3.55m x 3.04m	11'7" x 9'12"
Bathroom:	2.67m x 2.14m	8'9" x 7'0"