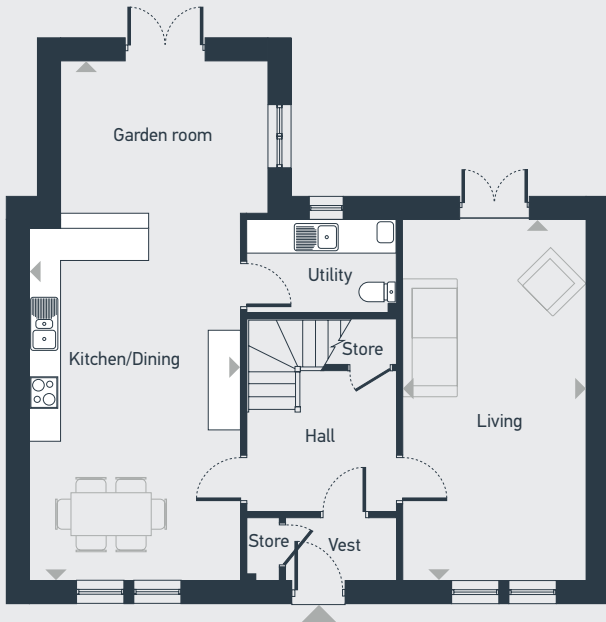
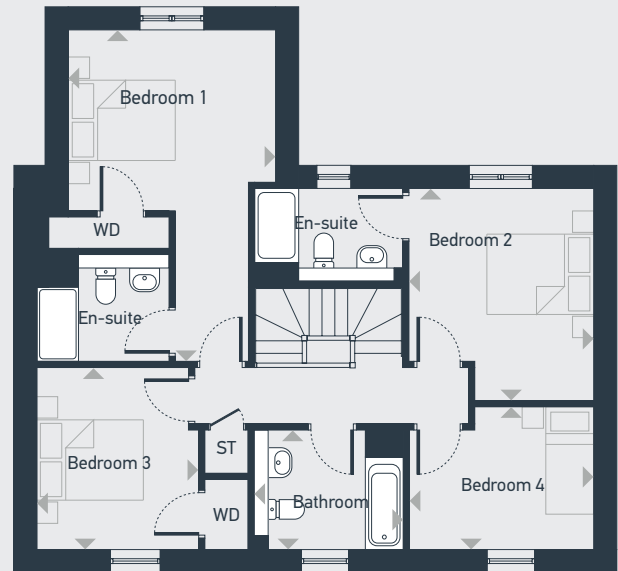




159.0 sq m / 1711.0 sq ft



GROUND FLOOR



FIRST FLOOR

DIMENSIONS	m	ft
Living	6.7m x 3.4m	21'11" x 11'3"
Kitchen / Dining	6.7m x 3.9m	21'11" x 12'10"
Garden Room	3.8m x 2.9m	12'7" x 9'8"
WC	2.8m x 1.8m	9'0" x 5'9"

	m	ft
Bedroom 1	3.8m x 3.3m	12'6" x 10'9"
En-suite	2.5m x 2.0m	8'1" x 6'6"
Bedroom 2	3.9m x 3.4m	12'9" x 11'2"
En-suite	2.8m x 1.8m	9'0" x 5'9"
Bedroom 3	3.4m x 3.0m	10'12" x 9'9"
Bedroom 4	3.4m x 2.7m	11'2" x 8'8"
Bathroom	2.8m x 2.2m	9'0" x 7'2"



01463 830 490 | placesforpeople.co.uk/tornagrain
6 Bishop's Hill Road, Tornagrain IV2 8AR